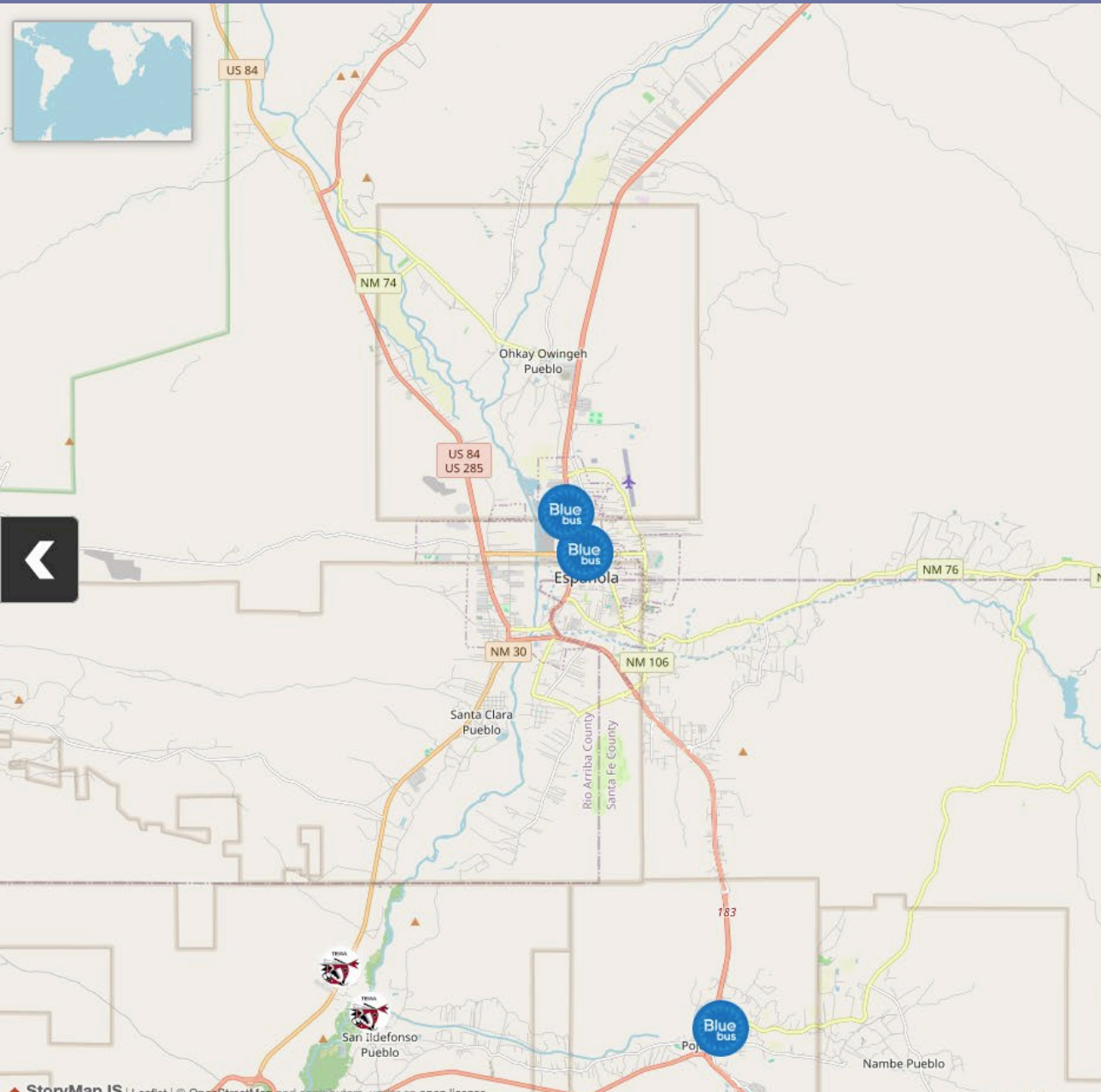


NCRTD

# Proposed Updates to San Ildefonso Route 230

March 2025  
Connecting Pueblo communities and Los Alamos  
Proposal by North Central Regional Transit District  
[ridetheblusbus.com](http://ridetheblusbus.com)

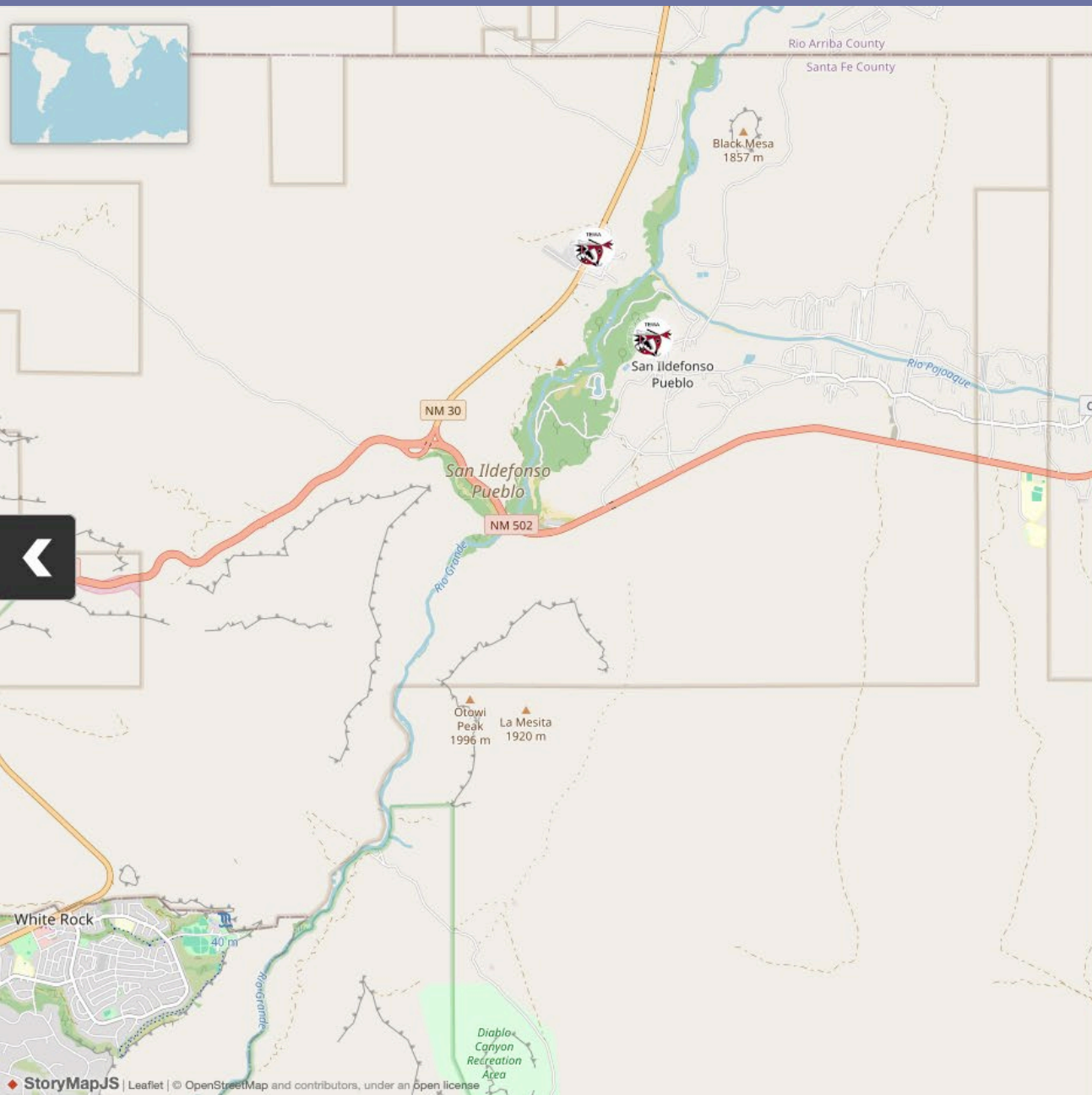
Start Exploring



NCRTD

## About NCRTD, The Blue Bus

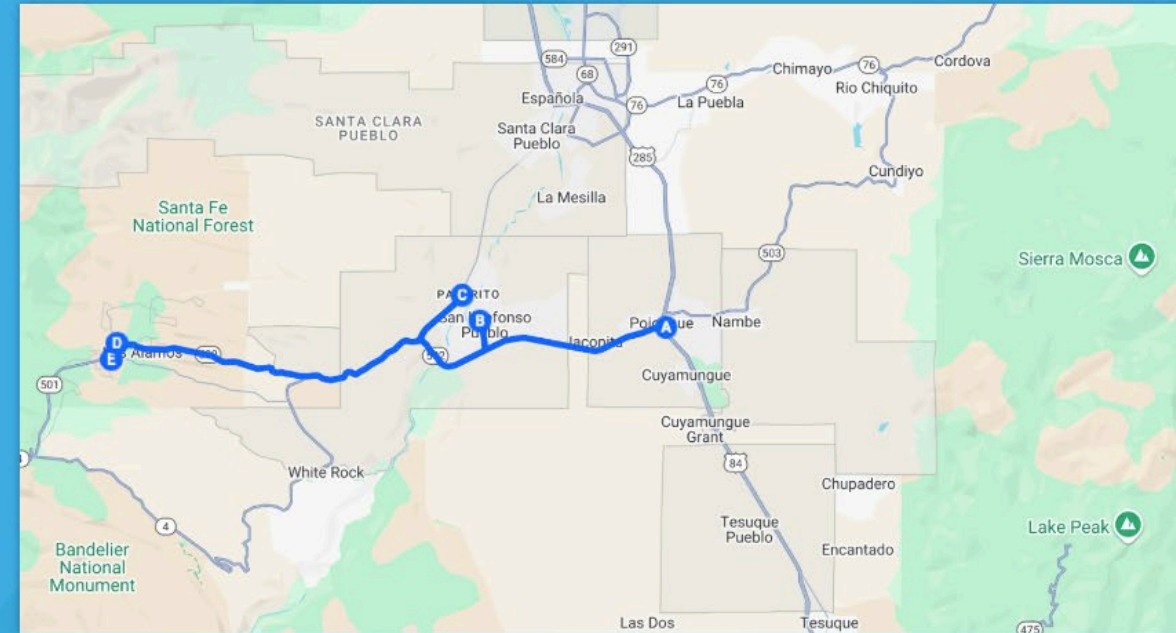
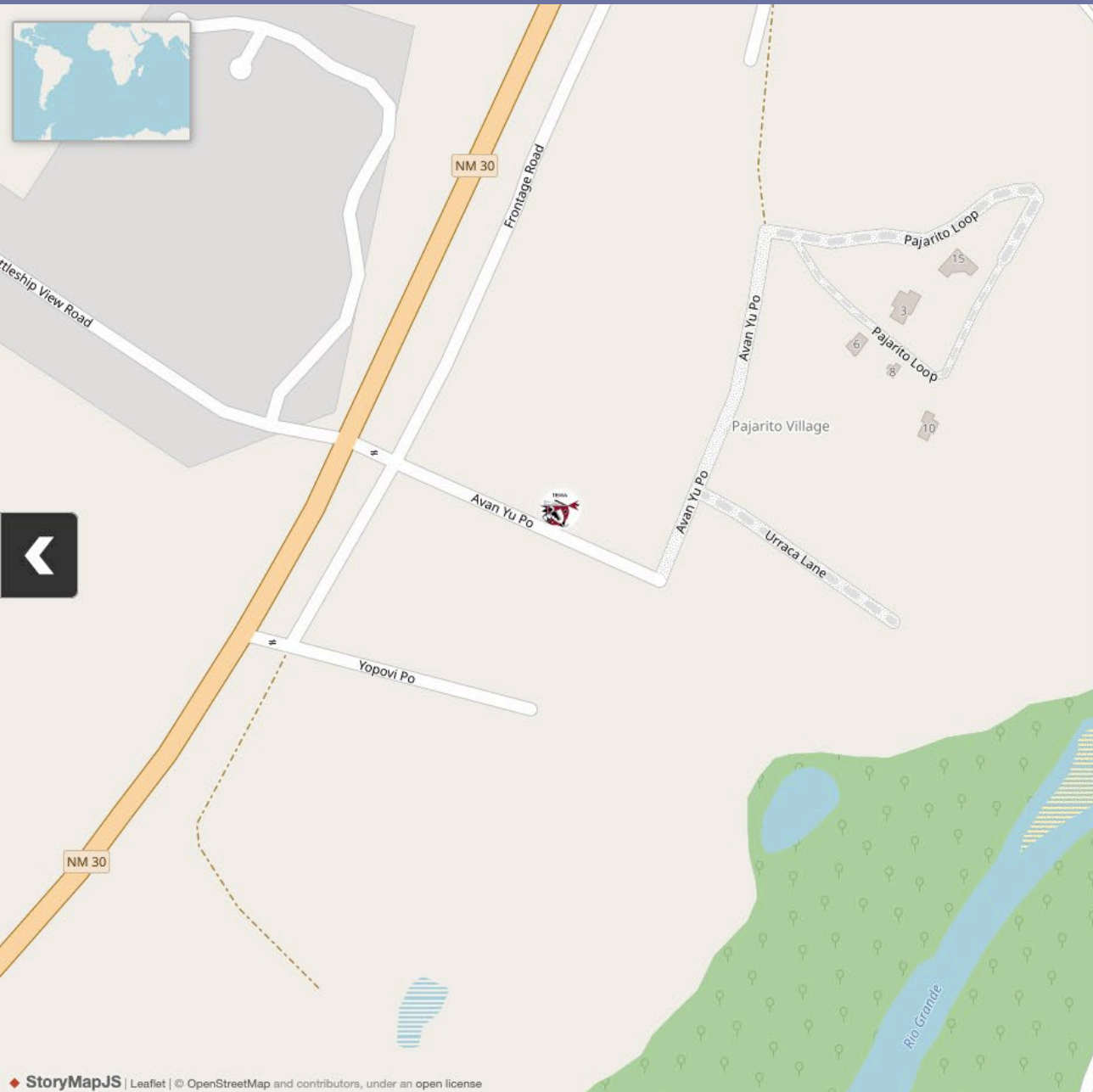
NCRTD was established in 2004 and serves an area of about 10,000 square miles, from Edgewood to Farmington. Annually, the Blue Bus provides more than 120,500 rides, including rides either operated or funded by NCRTD. Headquartered in Española, NCRTD is governed by a board of local, county and tribal government representatives. Nearly all services are provided free of charge and funded by New Mexico Gross Receipts Tax and Federal Transit Administration grant funding. Visit [ridethebluebus.com](http://ridethebluebus.com) for details.



The above graphic shows the Combined 500 Route, which is being replaced in this proposal.

# The 500 Tribal Combined Route

In response to a lack of drivers and riders caused by the COVID-19 pandemic, NCRTD reduced and consolidated schedules, including those serving Pueblo communities, leading to the establishment of the Combined 500 Tribal Route. Though it maintained service to the Pueblo communities, it required a more circuitous route between high-demand destinations like Española and Santa Fe. It also did not include access to Los Alamos.

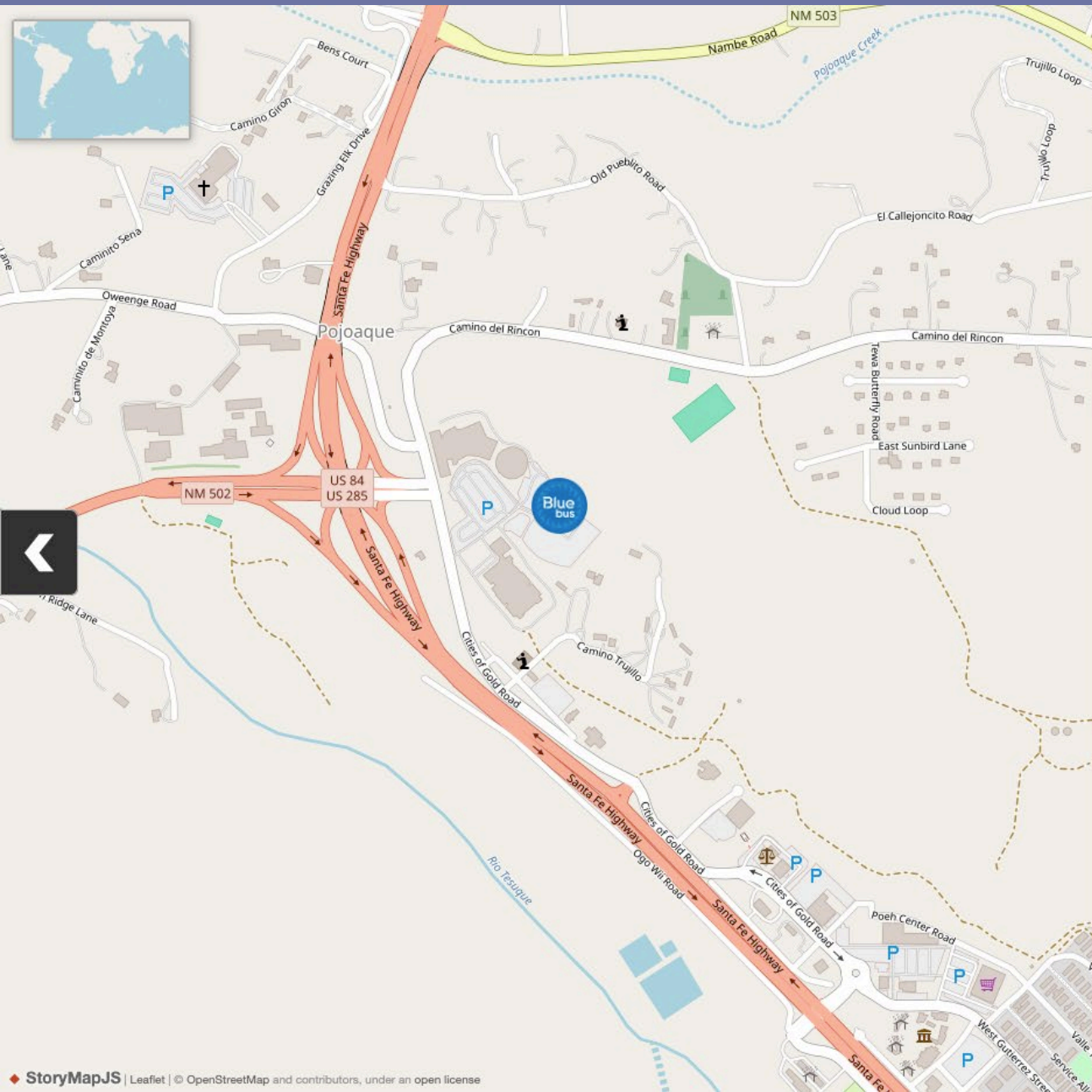


Proposed revision to the San Ildefonso Route 230.

NCRTD

## Revised Approach to Connecting San Ildefonso

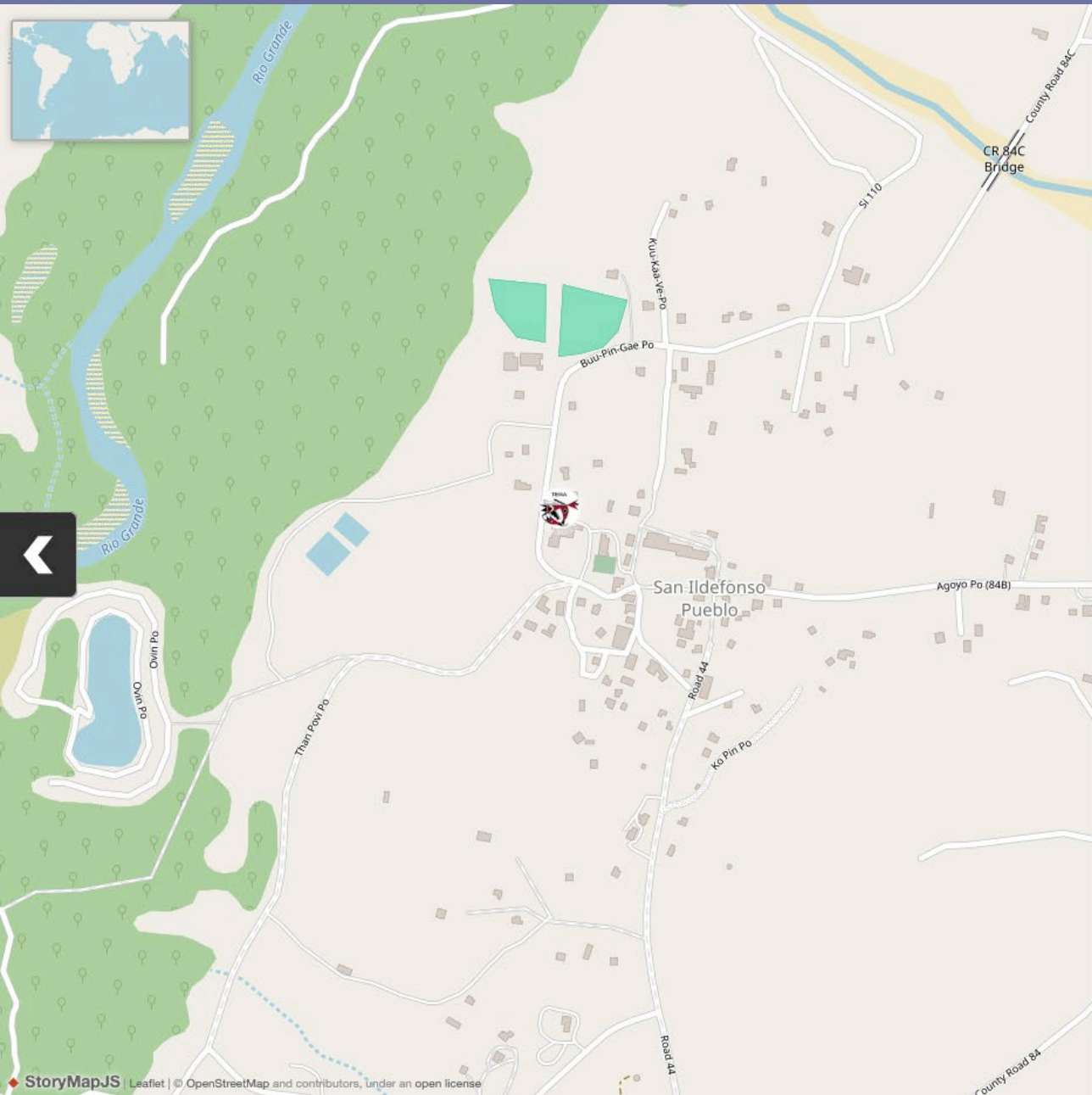
The proposed route now travels back and forth from Cities of Gold Park & Ride transfer center to the Atomic City Transit Center, providing greater flexibility and connection throughout the NCRTD, Atomic City and NMDOT Park and Ride systems. Route 230, as is the case with all NCRTD timed routes, is free to ride.



## Pojoaque — Cities of Gold

The Park & Ride stop at Cities of Gold will serve as a connection from San Ildefonso to other NCRTD routes, including those to Santa Fe, Tesuque, Española and points beyond.

- Pickup times toward Los Alamos: 6:22 am, 9:10 am, 10:50 am, 3:05 pm, 4:50 pm, 6:40 pm
- Arrival times from Los Alamos: 9:07 am, 10:47 am, 4:46 pm, 6:36 pm



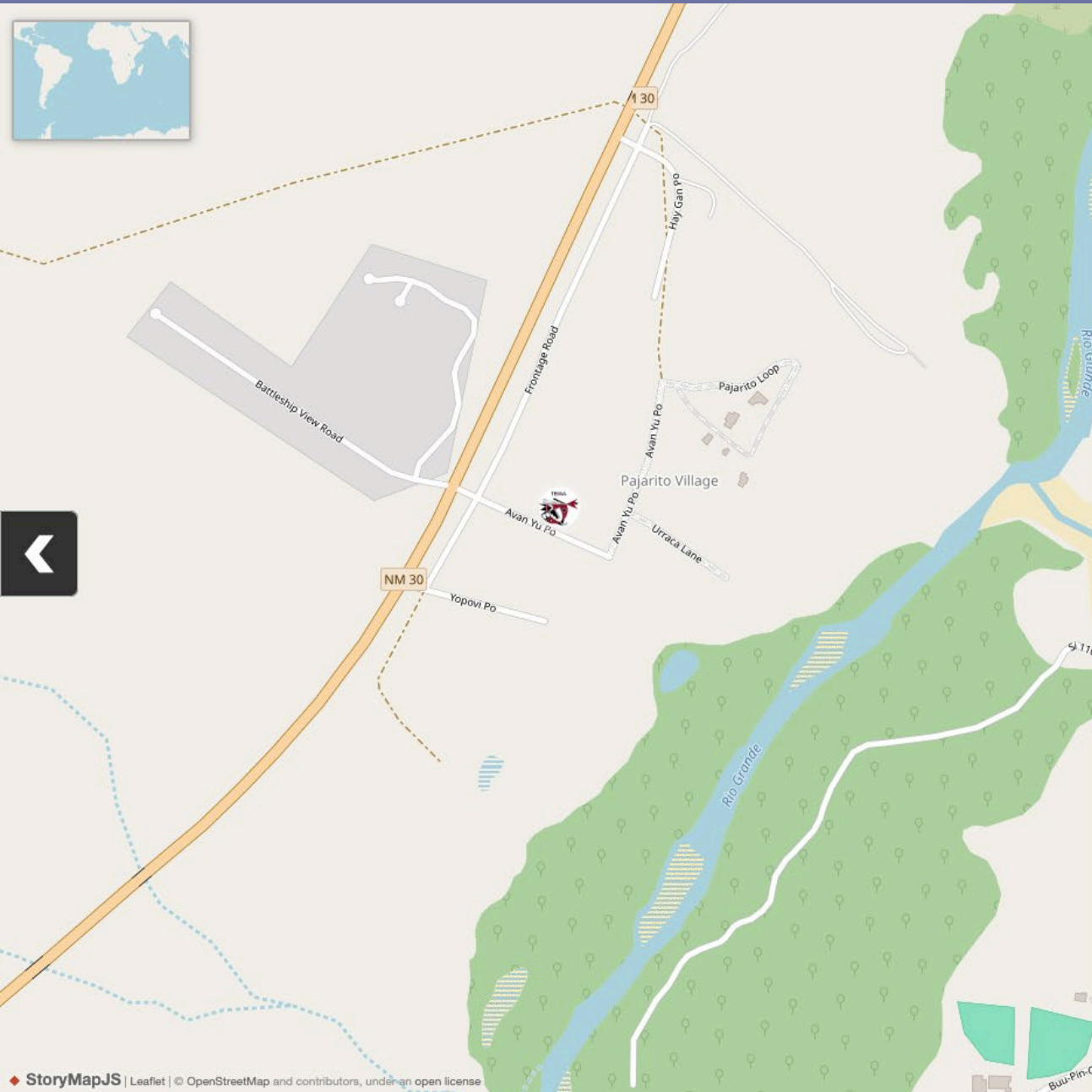
The gold shelter marks the pick up point at San Ildefonso.

## San Ildefonso Pueblo— Governor's Office

From, the Cities of Gold Park and Ride, the bus will proceed to the San Ildefonso Governor's Office stop.

- Pickups to Los Alamos: 6:34 am, 7:44 am, 9:22 am, 11:02 am, 3:17 pm, 5:02 pm, 6:52 pm
- Pickups to Pojoaque: 7:44 am, 8:49 am, 10:29 am, 4:30 pm, 6:20 pm

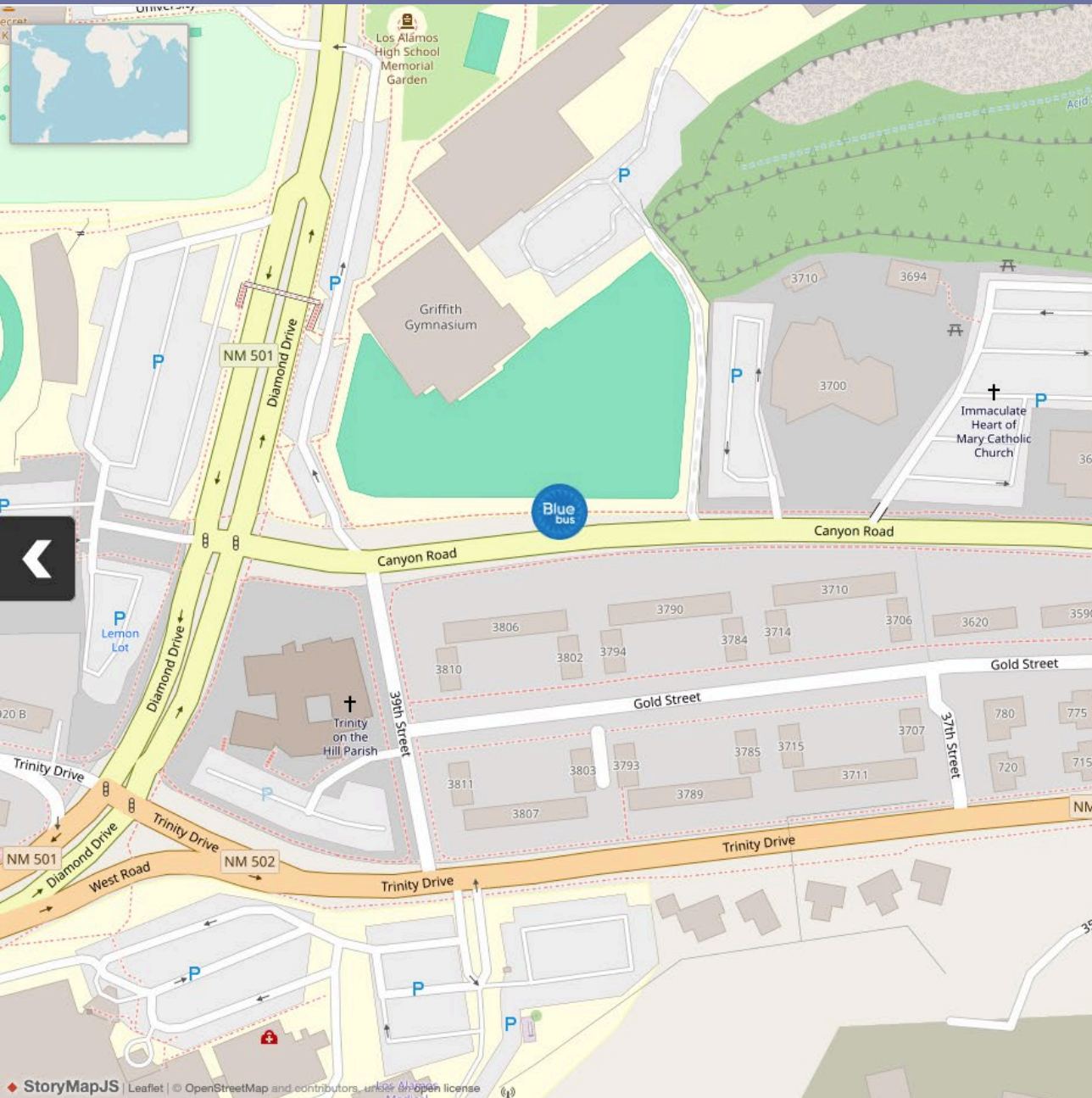
Additional pickup points at the San I Senior Center and Tunyo Po and Tunyo Loop (Black Mesa Housing.)



## San Ildefonso Pueblo — Avanyu Po/Battleship View Rd. & N.M. 30

Stop are planned for Avanyu Po and N.M. 30 as well as across the street at Battleship View Road and N.M. 30.

- Pickup times toward Los Alamos: 6:47 am, 7:56 am, 9:35 am, 11:15 am, 3:30 pm, 5:15 pm, 7:05 pm
- Arrival times from Los Alamos 7:32 am, 8:40 am, 10:20 am, 4:29 pm, 6:09 pm (Drop off only)



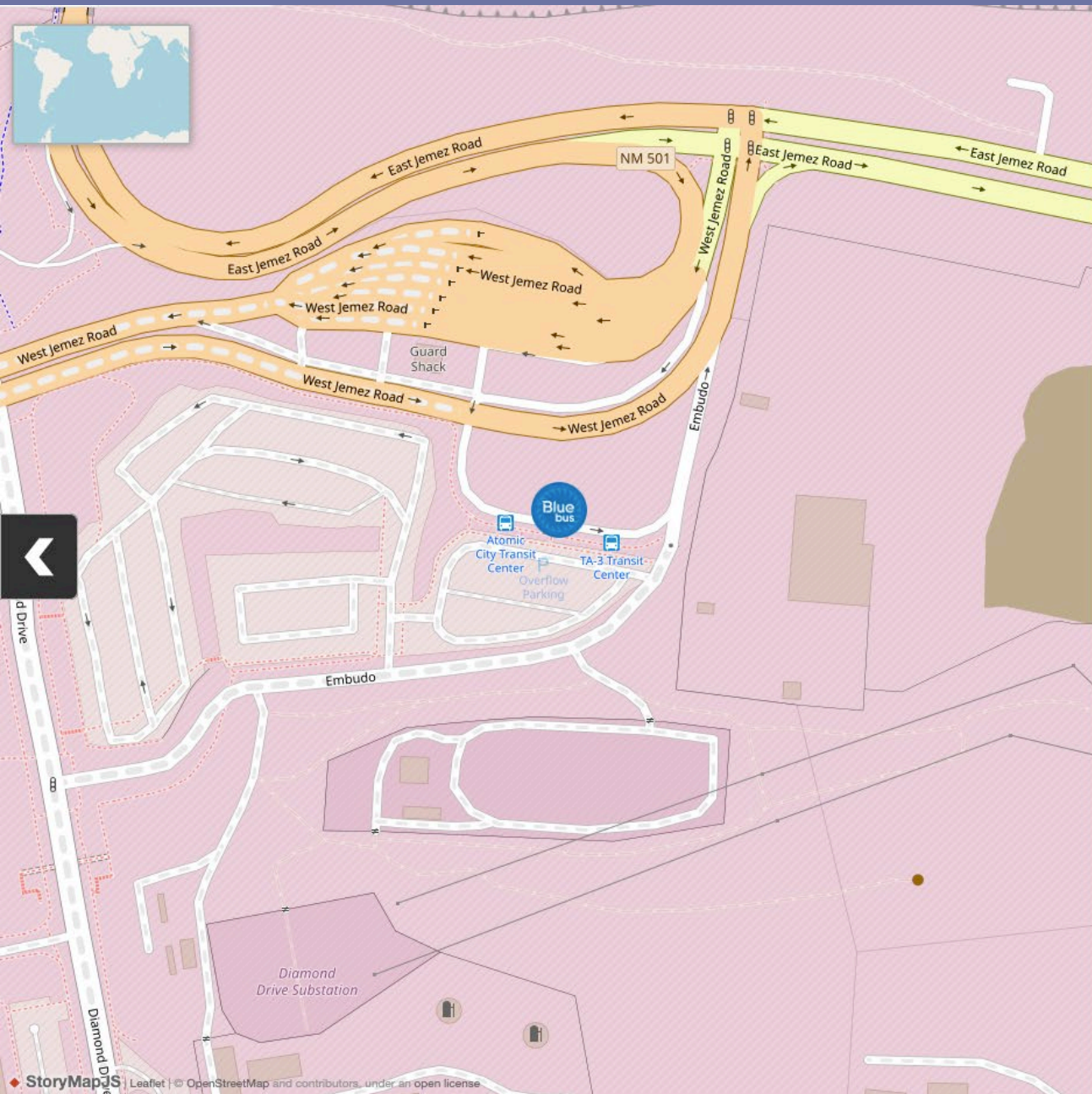
NCRTD

# Los Alamos High School

Passengers can leave the bus on Canyon Road just short of Canyon Dr.

- Arrival times from San Ildefonso: 7:07 am, 8:15 am, 9:55 am
- Departure times at the same stop 3:50 pm, 5:35 pm
- Bus will stop shortly at Atomic City Transit Center before proceeding back toward San Ildefonso and Pojoaque

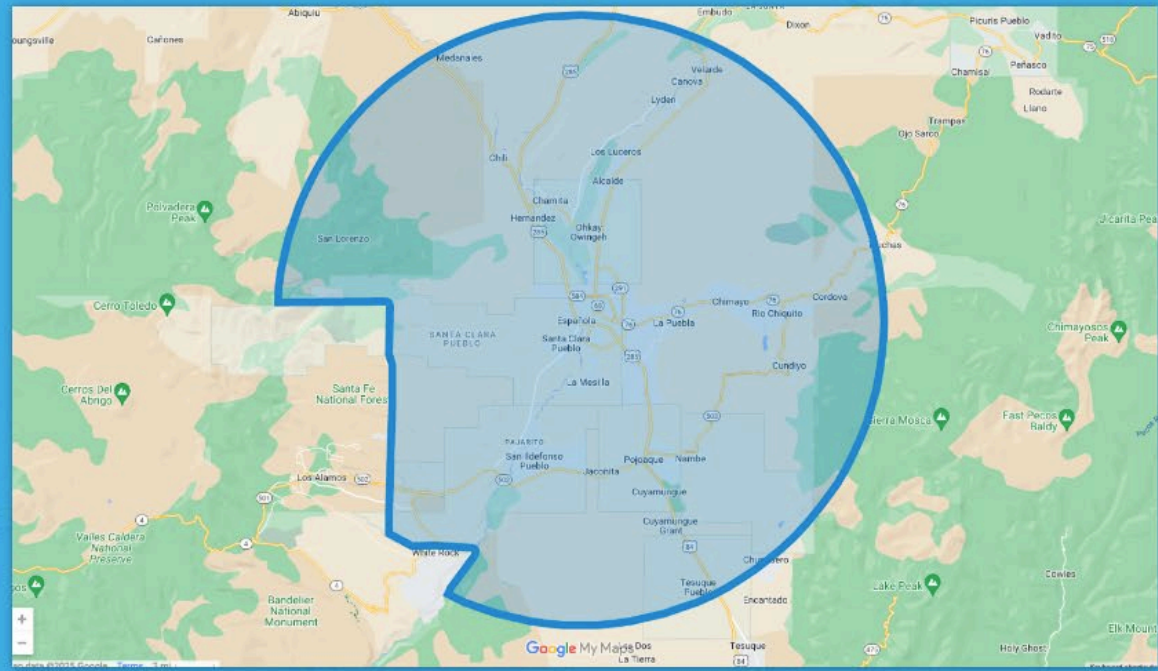
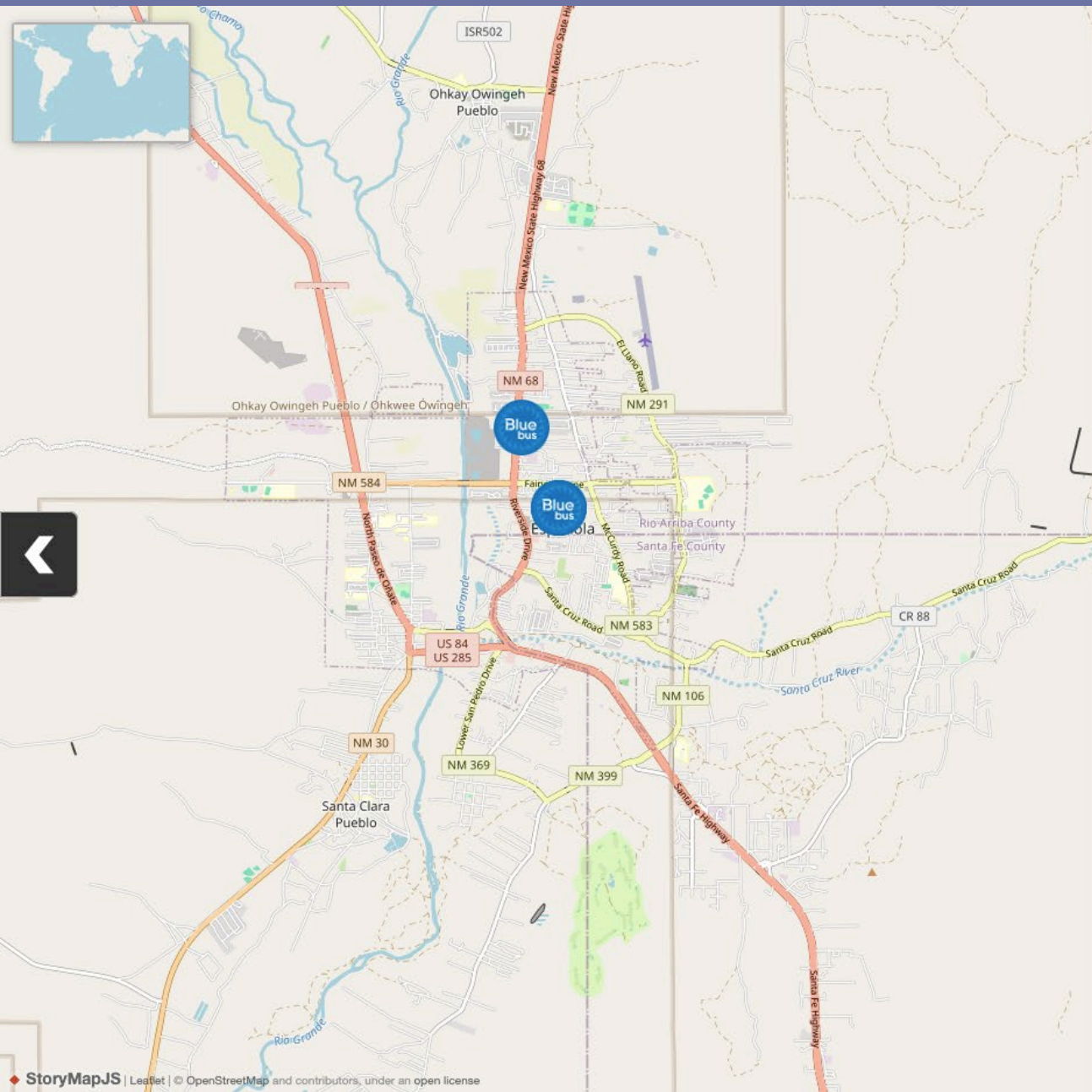




## Atomic City Transit Center

The Atomic City Transit Center serves as the return point from Los Alamos through San Ildefonso Pueblo to Cities of Gold Casino.

- Arrivals from San Ildefonso: 7:12 am, 8:20 am, 10 am, 3:55 pm, 5:40 pm
- Departures toward San Ildefonso and Cities of Gold: 7:12 am, 8:20 am, 10 am, 3:55 pm, 5:45 pm

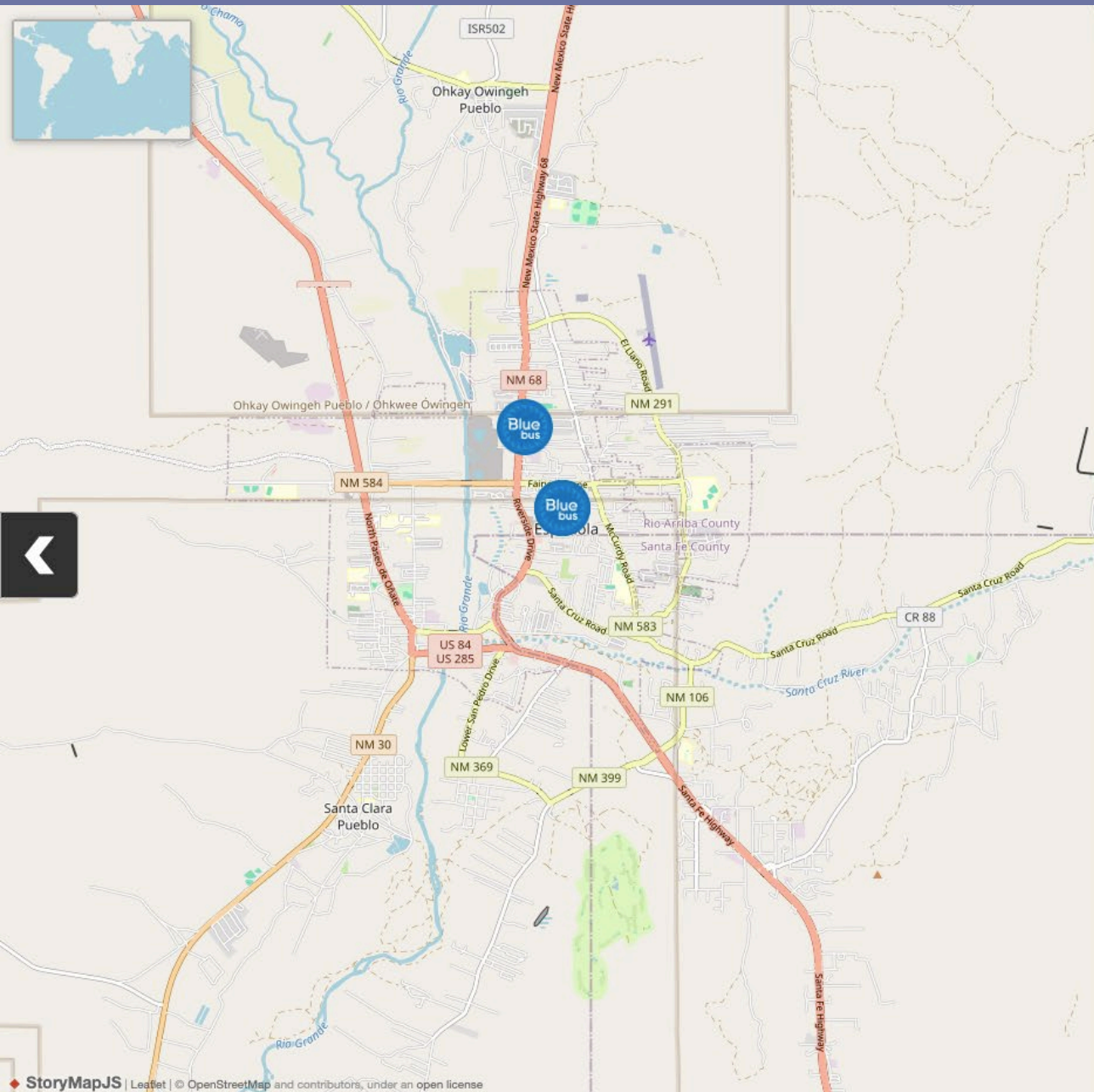


For more information on MyBlue, visit [ncrtd.org/myblue](http://ncrtd.org/myblue)

# My Blue — Going to Española

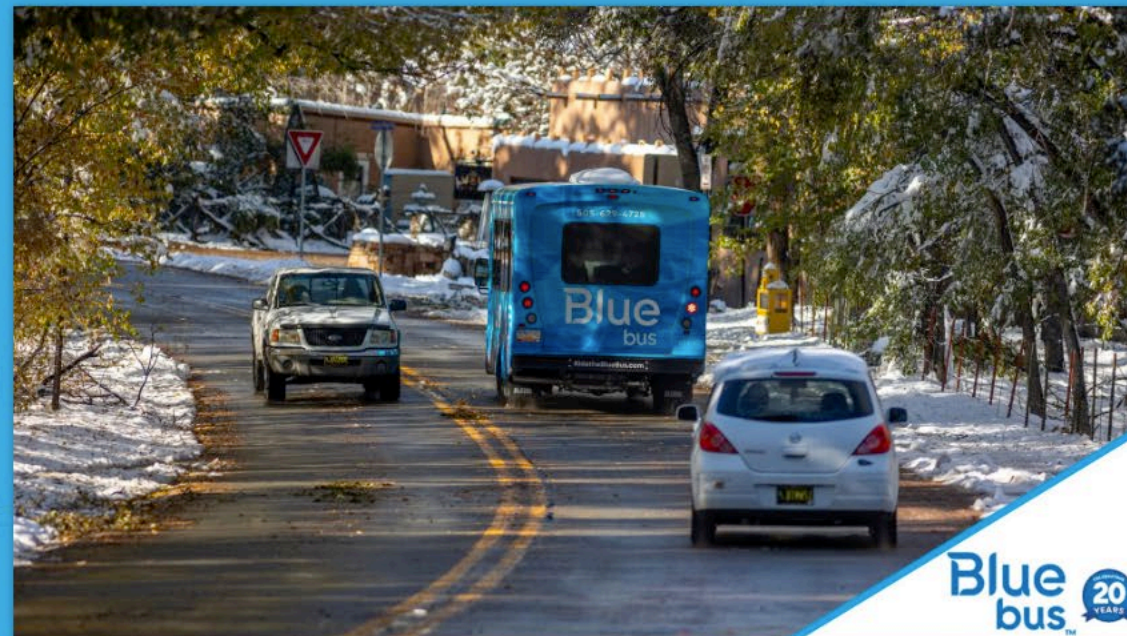
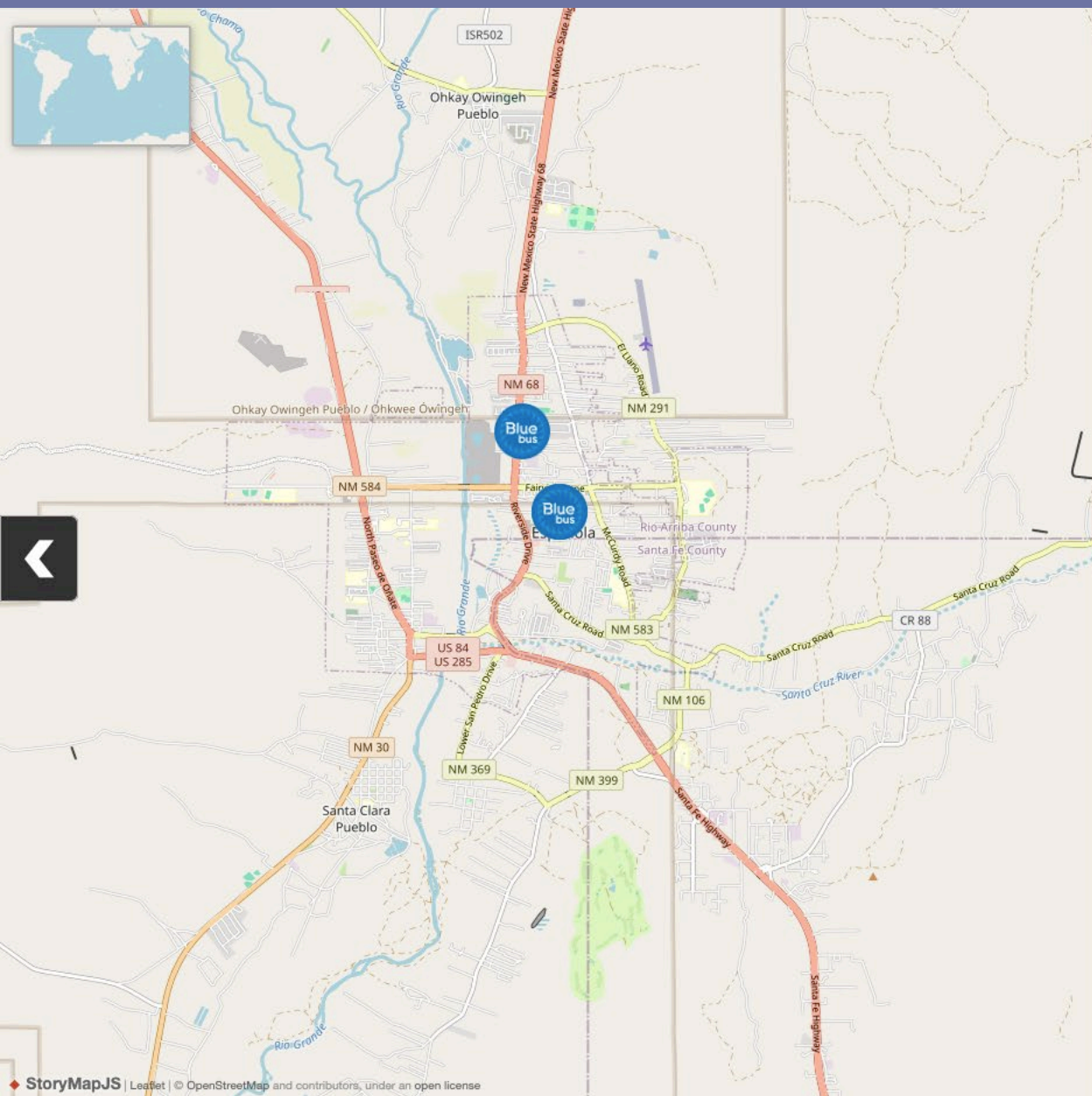
With the introduction of this new route, we encourage riders needing to go to Española to take advantage of the My Blue service, which, like a taxi, Uber or Lyft service allows you to book and pay for a ride by app ahead of time. This will be especially useful for people to cover that last mile home.

Visit [ncrtd.org/myblue](http://ncrtd.org/myblue) to download the app and begin booking rides. Rides are \$1 each way to Española and free inside the Tribal zone. MyBlue is available 6 am-6 pm Monday-Friday.



## Riding The Blue Bus

- Unaccompanied riders must be at least 10 years old
- Arrive five minutes before the scheduled time of departure
- Get to know your drivers
- Download the My Stop to track your bus
- Download MyBlue to book and pay for on-demand rideshare
- Sign up for rider alerts to be notified of any service disruption
- Bring a bike or wheelchair



## Contact Us

North Central Regional Transit District  
1327 North Riverside Dr  
Española, NM 87532  
Monday-Friday 8am-5pm  
[ridethebluebus.com](http://ridethebluebus.com)

Henry M. Lopez  
Communications and Outreach Coordinator  
[henryl@ncrtd.org](mailto:henryl@ncrtd.org)  
505-629-4704